

THE CAMPAIGN FOR GEMMA

Because You Matter.





Because You Matter: A \$3 million campaign to support an expansive new Martin Luther School campus.

At Gemma we are looking to the future and thinking big, driven by the knowledge of how much our work means to the children and families whose lives we accompany—and how much more we can do. Our students' potential is truly unlimited, and so is our opportunity for impact. *Join us in seizing that opportunity through your support of this transformational campaign.*

Gemma Services: An Overview

Our Mission: Gemma accompanies people of all ages through life's challenges using individualized, data-informed support.

Our History: Gemma Services was formed in 2019 by the merger of two long-standing nonprofits: Silver Springs—Martin Luther School and the Village, both founded as orphanages. These organizations' histories, strongly rooted in the Lutheran and Presbyterian faiths, date back to the late 19th century. Today, Gemma Services provides a range of programs that assist more than 3,000 youth and families to navigate challenging times, learn and strengthen skills, and reach for their brightest futures.

OUR PROGRAMS

- **Residential Treatment**—24/7/365 clinical treatment and trauma focused care for youth ages 6–14 who are grappling with significant emotional and behavioral challenges, many of whom have experienced traumas.

- **Community Based Programs**—a range of services that accompany youth and families in their own homes, schools, and communities. Programs include behavioral health, child welfare, and prevention services.
- **Martin Luther School**—an Approved Private School for students who need an out-of-district placement with individualized special education programming combined with social, emotional, and behavioral supports.

ABOUT MARTIN LUTHER SCHOOL

Martin Luther School provides a holistic and comprehensive educational experience for students in grades K–12. Our school empowers students to confidently engage in personalized, purposeful learning, joyfully celebrate their successes, and courageously challenge themselves and others to grow.

We believe in the unlimited potential of each of our students and we design our school program to assist them to achieve that potential.



Imagine that for many reasons—and many years—school has been a place of frustrations and limitations for you.

Now *imagine* coming to a new school where people see your strengths and you discover that you can be successful.

.....

Unlimited Potential—At Gemma's Martin Luther School, our students are capable of remarkable things. Knowing that, we hold high expectations for them, and provide them with the support they need to meet those expectations. Too often, the educational standard for students like ours is "just good enough." Not here. We provide an education for the 21st century—a robust curriculum with a strong focus on literacy paired with trauma-informed behavioral and emotional support to help students thrive.





Imagine that you are a young child for whom understanding and controlling your emotions is challenging—and you feel alone and like you don't matter.

Now imagine encountering adults who care, friends to have fun with, and a community where you know you belong.

•••••

Finding Joy—At Gemma, children come to us having faced many Adverse Childhood Experiences in their young lives. We want to make sure they have positive childhood experiences. That means creating many opportunities every day for play, for friendship, and for joy.

Imagine experiencing school failure, challenging home situations that might have included loss, abuse, or other trauma that has made life—and school—difficult.

Now imagine growing beyond those circumstances, finding the support and accompaniment you need, learning, living life, and loving school.

.....

Transforming—Education is often described as a transformative experience, but at Martin Luther School, that transformation can be more far-reaching and profound than might even seem possible. It is an experience designed not only help students heal but to prepare them to realize their potential, to thrive, and to find fulfilling futures in our 21st century world.





Next Imagine This...

- **A school campus** that truly supports our educational vision—with spaces for innovative and best-in-class educational programming for students in k-12th grades.
- **A school equipped to provide** the kind of opportunities—in and outside of the classroom—that any child would feel fortunate to enjoy.
- **An educational setting** that will allow our school to grow to meet the needs of students in our communities, with spaces and programming that every child deserves.



**Our Martin Luther School's new location,
less than a mile from Gemma's Plymouth Meeting campus.**

A New Martin Luther School Campus

Martin Luther School is a thriving school facing serious space constraints. Our current facility does not support the rich array of programming we dream of providing—and it can't accommodate our growing student body as it expands to include grades 9–12. Fortunately, Gemma has been able to acquire an ideal property to meet the school's needs, and we are now planning a transformative renovation of the existing building on the site and enhancements to the property. Our school's move to this new home will allow Martin Luther School to offer a truly best-in-class experience, while making space available at our current campus for the expansion of other Gemma programs.

OUR GOALS

- Design a building to support best practices in 21st century teaching and learning.
- Provide space essential for all grades—and to support future enrollment growth.
- Support a rich learning experience, focused on personal growth in and beyond the classroom, spanning academics, athletics, and extracurriculars.
- Welcome our students into a school building and campus that show them how deeply they are valued and fuel a strong sense of school spirit, and their "Panther Pride."



"This will be a school that provides an exceptional environment that honors, nurtures, and respects our students, supporting their academic and social-emotional growth, because they deserve it."

Eva Morrison, Ed.D.,
Vice President of
Education

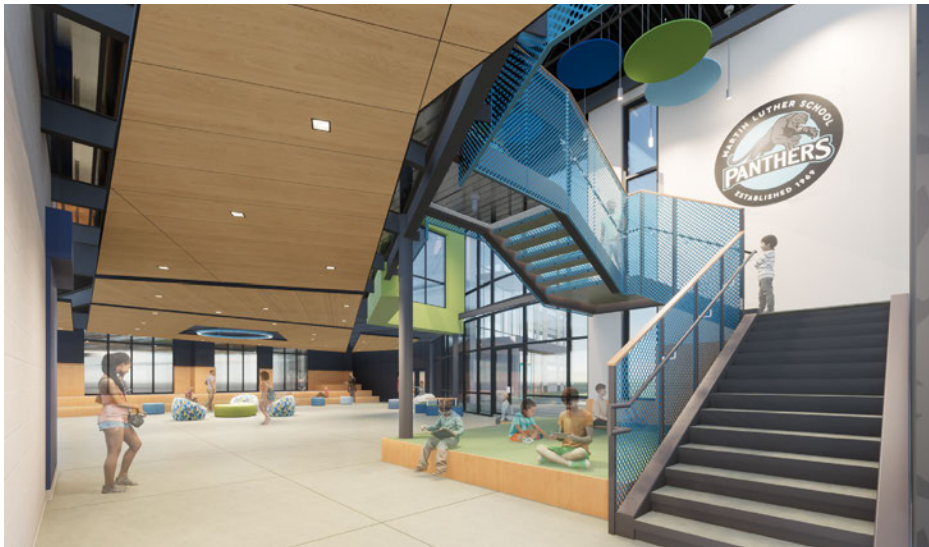


A Place of Possibilities

Our new campus will open up an array of new opportunities for Martin Luther School and our students.

1. To support **enrollment growth**—allowing the school to grow to sustainably educate 380 students.
2. To nurture **student pride** in their school—fostering a sense of belonging and community.
3. To **expand educational spaces** for teaching and learning—with 34 planned and flexible classrooms.
4. To allow access to **a wider diversity of learning experiences**—with space for at least eight electives and specialized classrooms.
5. To create **private spaces for counseling**—comfortable and confidential areas for students and counselors to meet.
6. To provide **designated lunchrooms** for students to socialize—moving away from classroom-based lunches.
7. To **increase use of outdoor spaces**—with easier access to enjoy the beautiful campus for learning and activities.
8. To **accommodate visitors and spectators** at events and games—in a new gym with moveable bleachers.
9. To **nurture student creativity** and self-expression in a new way—with a Black Box theater for student performances.
10. To **expand athletic opportunities**—with a new track and field, part of a longer-term plan, pending public funding.







Inspiring Images—Our architects from Kimmel Bogrette Architecture have envisioned educational spaces designed just for our school, with bright, spacious, and functional interiors. In addition to classrooms, the building will include labs, dedicated art and music rooms, a library, community gathering spaces, a cafeteria, a gym, private spaces for counseling, and more. Exterior plans include playgrounds, a track, and athletic facilities to include a multi-sport playing field.





Because the possibilities are unlimited.

At Martin Luther School and across Gemma Services, we make a simple, powerful commitment to our youth and families: to accompany them on their journey through life's challenges. Today, we are embarking on a journey of our own, following a path of progress that will lead to an inspiring new campus for our school and a world of new opportunities for our students.

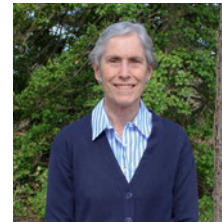
This campaign is essential to our success and the success of our students. Along with funding from other sources, fundraising will provide the resources we need to bring our vision of an exceptional school to life. On behalf of our students, we ask you to accompany us on this thrilling journey.

Contact Gemma today to discuss your commitment to The Campaign for Gemma Services.

info@gemmaservices.org
or 610-825-4440 x3206



Nina Rogers, Chair,
Board of Trustees



Yardly Jenkins, Member,
Board of Directors
Co-Chair, Campaign Committee

"All children deserve the opportunity to grow and reach their fullest potential. Gemma and our campaign embody this belief. Please join with us and help Gemma create a future full of possibility for children and their families!"



Kristen E.M. Gay, Ph.D.,
President & CEO

